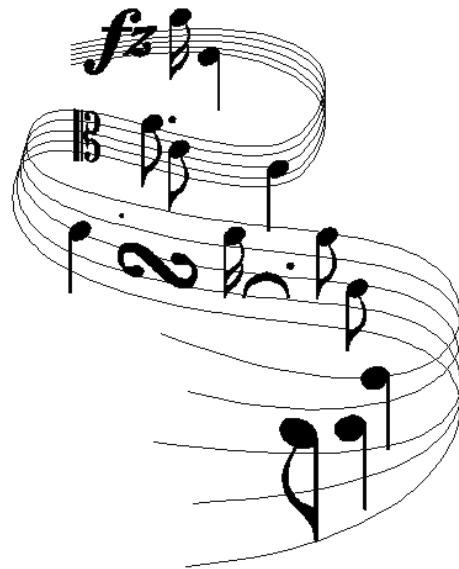


CONNECTICUT VALLEY MUSIC FESTIVAL ASSOCIATION

Vermont Music Educators Association
District VI

Festival Handbook 2014-2015
www.vmea.org



Vermont Music Educators Association - District VI Mission Statement:

To create enriching musical experiences, with high standards of musicianship and responsibility, for students of Vermont Music Educators Association District VI and to encourage as many of those students as possible to meet those standards and participate in the Association's festivals.

OFFICERS

CHAIRPERSON: Connie Wilcox
Black River High School
45 Main Street
Ludlow, VT 05149
constance.wilcox@trsuvt.org

SECRETARY: Cindy Hughes
Riverside Middle School
13 Fairground Road
Springfield, VT 05156
cindyhughes@ssdvtt.org

TREASURER: Thomas Nasiatka
Brattleboro Area Middle School
109 Sunny Acres
Brattleboro, VT 05301
451-3526 ext.3526
tnasiatka@wsevt.org

2014-2015 MANAGERS

- HIGH SCHOOL BAND MANAGER:** Jim Chlebak, Springfield High School
jchlebak@ssdvt.org
- HIGH SCHOOL CHORUS MANAGER:** Ron Kelley, Leland and Gray Union High School
rkelley@lelandandgray.org
- HIGH SCHOOL JAZZ BAND MANAGER:** Steve Rice, Brattleboro Union High School
srice@wsesu.org
- HIGH SCHOOL JAZZ CHOIR MANAGER:** Sue Maddern, Twin Valley High School
smaddern@tvhs.k12.vt.us
- MIDDLE SCHOOL BAND MANAGERS:** Tom Nasiatka, Brattleboro Area Middle School
tnasiatka@wsesu.org
- MIDDLE SCHOOL CHORUS MANAGER:** Cindy Hughes, Riverside Middle School
cindyhughes@ssdvt.org
- MIDDLE SCHOOL JAZZ BAND MANAGER:** Danielle Fraser, Hartford High School
fraserd@hartfordschools.net
Mike Connerty, Hartford Memorial Middle School
connertym@hartfordschools.net
- DISTRICT VI LIBRARIANS:** Rob Gattie (Choral), Hartford High School
gattier@hartfordschools.net
Danielle Fraser (Band), Hartford High School
fraserd@hartfordschools.net

AUDITIONS

FALL AUDITIONS

Monday, October 6, 2014 Dummerston Elementary School
Host/Coordinator(s): Mary Bandish, Rita Corey
Dummerston Elementary School
52 Schoolhouse Road
E. Dummerston, VT 05346
mary_bandish@wsesu.org

Thursday, October 9, 2014 Riverside Middle School, Springfield, VT
MS Chorus Selection Meeting 6:00PM. Bring rubrics, nominee form,
\$3.00/student fees
Or, mail them by Sept. 26, 2014 to:
Cindy Hughes, MS Chorus Manager
Riverside MS.
Springfield, VT 05001 by Sept. , 2013
cindyhughes@ssdvt.org

WINTER AUDITIONS

Monday, December 8, 2014 Green Mountain Union High School
Hosts: Fritz Wendlandt, fritz.wendlandt@trsu.org
Cindi Austin, cynthia.austin@trsu.org

Snow Date, Wednesday December 10, 2014

Coordinator: Polly Westcott
Chester-Andover Elementary School
72 Main Street
Chester, VT 05143
pauline.westcott@trsu.org

FESTIVALS

Fall Festival: November 21-22, 2014 – Bellows Falls Union High School
Winter Festival: January 30-31, 2015 – Hartford High School

DISTRICT MEETINGS

Thursday, August 21, 2014 6:00pm Kurn Hattin School, auditorium
Thursday, October 9, 2014 6:00pm Riverside Middle School for MS Chorus selection
Saturday, November 22, 2014 10:00am Bellows Falls Union High School, during the Fall Festival
Saturday, January 31, 2015 10:00am Hartford High School, during the Winter Festival

Directions to Meetings, Auditions and Festivals

Bellows Falls Middle School

From the North:

Take Exit 6 from I-91. Follow Rt. 103 which then becomes Rt.5 South into Bellows Falls. Stay on Rt. 5 which becomes Atkinson St. At the 4-way stop, turn left onto School St. The Middle School is on the left.

From the West:

Take Rt. 103 East, and proceed as above.

From the South:

Take Exit 5 from I-91. Turn right off the ramp onto the access road. At Rt. 5, turn left and follow Rt. 5 North into Bellows Falls. At the light, continue straight onto Atkinson St. Follow above directions except turn right onto School St.

Bellows Falls High School

Take exit 5 toward US-5/VT-121; merge onto I-91 access road/Westminster St Hwy; turn left onto US-5 North; follow for about 1.7 miles; turn left at High School Road; the school is at the end of High School road.

Dummerston Elementary School

Take Exit 4 from I-91 toward Putney. Turn left on US Rt. 5 for 2.4 miles. Turn right on School House Road. School is on the right.

Green Mountain

From I-91 take exit 6; follow US-103 approximately 8 miles to GMUHS. It will be on your left.

Kurn Hattin

Take exit 5, turn left at the end of the ramp. Turn right onto the first street on the right called "Westminster Heights Road". The Kurn Hattin campus is 2 miles ahead.

Riverside Middle School

From I-91 take exit 7; turn or merge onto VT Rt. 11 West for about 5 miles; turn right on Fairground Road.

Windsor High School

From the North:

I-91 Exit 9. Turn left at US-5/US-12. Turn right at State Street. Turn left at Ascutney Street.

From the South:I- 91 Exit 8. Turn right at US-131. Turn left at US- 5/US-12. Turn left at State Street. Turn left at Ascutney Street.

GENERAL MEMBERSHIP NOTES

- While individual teachers are not required to assist in the running of any given festival, excluding those already involved in it, it is understood that all participating students are required to have at least one teacher or principal approved chaperone present at all times. Alert the chairperson of any teacher conflicts ahead of time so that someone can be appointed and approved to take their place for the period of time in question. Each teacher/chaperone is expected to assist in student supervision.
- All payment requests need to be written on a voucher form and turned in to the treasurer.
- Participation forms must be postmarked by the due date at the latest in order to participate. Fees must be **sent directly to the treasurer**:

Thomas Nasiatka
Brattleboro Area Middle School
109 Sunny Acres
Brattleboro, VT 05301
tnasiatka@wsesu.org

- Use of photocopies in auditions will result in disqualification
- Representation in the Festival: The manager would like to accept, on the basis of district-wide representation, at least one student from every school that has at least one auditioning student. However, students will not be added to the jazz ensembles as part of this process because of the limited size and individual part characteristics of those groups. Furthermore, consistent with All State policy on this issue (Section VII, E.), if the manager feels that such an addition would compromise the ensemble's balance or quality, or would displace a qualified student, then the addition will not be made and that school will not have a student in that year's festival.

FESTIVAL DUE DATES

FALL FESTIVAL (MS CHORUS/MS JAZZ BAND/ HS BAND/ HS JAZZ CHOIR)

Friday, September 19, 2014 (postmarked) - **Audition applications for H.S. Band, M.S. Jazz Band, H.S. Jazz Choir and \$3.00/student fees** due to Audition coordinators, Mary Bandish, Dummerston Elementary School, 52 Schoolhouse Road, E. Dummerston, VT 05346.

Friday, September 26, 2014 (postmarked) – **Middle School Chorus nominee form, audition rubric/scoresheets and \$3.00/student fees** due to Cindy Hughes, Riverside Middle School, 13 Fairground Road, Springfield, VT 05156

Friday, October 31, 2014 (postmarked by) **Festival Participation forms and 10.00/student fees due to Treasurer:** Thomas Nasiatka, Brattleboro Area Middle School, 109 Sunny Acres, Brattleboro, VT 05301.

WINTER FESTIVAL (MS BAND/ HS CHORUS/HS JAZZ BAND)

Friday, November 7, 2014 (postmarked) **Audition applications and \$3.00/student fees** due to Polly Westcott, Chester-Andover Elementary School, 72 Main St., Chester, VT 05143

Friday, January 16, 2015 (postmarked by) **Festival Participation forms and \$10.00/student fees due to Treasurer:** Thomas Nasiatka, Brattleboro Area Middle School, 109 Sunny Acres, Brattleboro, VT 05301.

2014-2015 BUDGET

Expenses:

Conductors	450x7	3150
Accompanists	175x3	525
Piano Tuning	140x2	280
Music Purchase	(variable)	1150
Mileage .55 /mile for Conductors	80x7	
		560
Lodging for Conductors (80 x 7)		560
Meals for Conductors (dinner/no alcohol)		200
Meals for Managers (dinner/no alcohol)		200
Lunches for Conductors and Managers		225
Hospitality Room		150
Postage (estimate)		100
Programs		100
Police	100x2	200
Custodians	100x2	200
Auditions – refreshments		175
Auditions – forms		75
Officer's Expenses:		
VMEA Liability		100
Secretary and Treasurer		50
VMEA mileage		100
	TOTAL	\$ 8100

Income

Lost and sold music	40
Participation fees at \$10 per student x 400	4000
At door Sale of Tickets	2260
Audition Fees \$3 x 600	1800
	TOTAL
	\$ 8100

Other Financial Aspects:

1. Ticket prices for all festivals

adult	\$4.00	student/senior citizen	\$2.00
-------	--------	------------------------	--------
2. Mileage reimbursement rate \$0.55/mile
3. Refunds for Non-participants -\$0-
4. Mileage reimbursement is available for conductors, but not for accompanists.
5. Expenses for conductors include lodging, meals and travel. Expenses do NOT include personal telephone calls, alcoholic beverages, or spouses lodging.

JOB DESCRIPTIONS

CHAIRPERSON

1. Attend all VMEA Executive Board meetings; District VI to pay for mileage
2. Attend and preside over all District VI meetings
3. Introduce all festival performances
4. For each meeting, coordinate presentations by the secretary, treasurer, ensemble managers, festival hosts, and other reports concerning District VI
5. Update district handbook and distribute at the annual August meeting to begin the new school year. Mail the handbook to those not attending the meeting.
6. Contact all participating school principals at the beginning of each school year to let them know of all district audition and festival dates prior to the start of the new school year
7. Contact any new members of the district either verbally or in writing prior to the start for the new school year
8. Check with managers and treasurer to see that all fees and forms have been received by the given due dates
9. Contract with host schools for fall and winter festivals
10. Serve a two-year position
11. Select and present an award to the outstanding music educator of the district

SECRETARY

1. Take minutes of all meetings and distribute to all district teachers
2. Send agendas and maps for upcoming meetings to all district teachers
3. Keep historical book up to date and bring to festivals
4. Retain copies of festival programs for future reference
5. Serve a two-year position

TREASURER

1. Keep an accurate ledger record of the district's finances
2. Pay all bills (by check) and record all transactions
3. Receive all fees for festival participation from each school
4. Present written financial statement for distribution at each district meeting
5. Have checks ready for conductors and accompanist at conclusion of festivals
6. Prepare cash-boxes for all festival performances and collect admission fees
7. Stay aware of current financial status, and alert chairperson of any problems
8. Serve a two-year position

AUDITION HOST

1. Secure proper number of audition rooms; two with piano, one with percussion equipment (timpani, drum set, etc.)
2. Set up and monitor information/check-in desk
3. Provide map of audition areas and monitors for each room
4. Provide “directors room” for munchies and coffee (teachers & adjudicators only)
5. Obtain adjudicators for each audition room
6. Obtain score sheets from last audition host
7. Provide adjudicators with appropriate sight singing material
8. Compile schedule.
9. Mail schedule, sample score sheets, sight-reading material and audition piece to the adjudicator prior to the auditions
10. Tell vocal judges to be prepared to sing
11. Give copy of preference sheets to all managers

ADJUDICATORS

1. Be positive; keep comments constructive and supportive
2. Show respect and concern for the auditioning student
3. Provide encouragement
4. Be professional in your evaluation. Vocal adjudicators should not compare the auditioned voice to other voices in the quartet
5. Follow audition guidelines outlined in the handbook
6. Provide reasonable time for sight-reading
7. Check for original copy of audition piece
8. Scales must be played from memory with correct articulation and rhythm
9. Vocal adjudicators must be able to sing their part.

ENSEMBLE MANAGERS

1. Obtain guest conductor for specific group and festival. Guest Conductor will sign a copy of the guest conductor contract provided in the handbook.
2. To the guest conductor, send copies of past programs to suggest levels of difficulty and prevent duplication for music performed in recent festivals, suggest to guest conductor to plan a program that does not exceed 25-30 minutes and urge the guest conductor, whenever possible, to select music from the District library, VMEA library, etc.
3. Obtain from the guest conductor:
 - a. music selected for the program
 - b. program order
 - c. seating arrangements and instrumentation
 - d. special percussion and instrumental needs
 - e. professional biographical information for the program
 - f. special personal needs, if any
4. Upon receipt of information from guest conductor, pass on to festival host
5. Obtain in conjunction with host, accommodations/lodging for the guest conductor
6. Obtain accompanist
7. Obtain, record and distribute music for ensemble, leaving ample time for festival
8. Tabulate score sheets following auditions and determine instrumentation and voicing of ensembles

ENSEMBLE MANAGERS (CONT.)

9. Following auditions, mail results and adjudication sheets to all schools.
10. Send list of participating students and their respective schools to the festival host
11. Notify chairperson and treasurer of any student cancellations
12. Retain receipts of expenses for reimbursement
13. Coordinate concert attire of conductor and accompanist
14. Introduce the ensemble and conductor at the performance
15. Collect, collate and return music after the festival
16. Send bills and missing music to the appropriate director(s), collect the money and turn it in to the treasurer
17. District VI will provide for manager's dinner either Friday or Saturday night
18. High School Jazz manager will provide sight-reading material for the audition
19. Managers will coordinate with the host school procedures for lockdown and evacuation of the building.
20. In keeping with the cooperative nature of the festival choral experience, names of students in the choral ensembles will be listed in the program in alphabetical order, by part.

GUEST CONDUCTORS AND ACCOMPANISTS

Each guest conductor will choose his/her own concert program, with the assistance of the ensemble manager. If there is a problem with any aspect of the program, the manager will contact the conductor as soon as possible. Each guest conductor will have all the meals paid for, as well as lodging on the night before the concert if so chosen. The honorarium for conducting is \$450.00 plus mileage at the budgeted rate and expenses (see budget). Each accompanist, so chosen by the ensemble manager, will receive an honorarium of \$175.00.

FESTIVAL HOSTS

1. Establish rehearsal area and arrange transportation if needed
2. Provide any needed equipment for the festival, including:
 - a. music stands
 - b. risers - instrumental and or choral
 - c. repair kit
 - d. percussion equipment
3. Provide estimated cost for meals, etc. to treasurer and chairperson
4. Provide publicity to local newspapers, T.V., and radio prior to the festival
5. Receive all program info. from the managers and have the program printed
6. Tune piano(s)
7. Provide custodial services
8. Provide separate room for teachers' lounge and meeting area
9. Provide refreshments for conductors and teachers
10. Provide registration table, schedules and nametags for all participants
11. Arrange for setup and teardown crew for the concert
12. Alert chairperson of any cancellations or postponements
13. Must be present at all times during the festival
14. Alert all teachers and students to special rules and regulations that pertain especially to the host school.
15. Coordinate take-out lunches for teachers/conductors
16. Coordinate with ensemble managers an emergency or lockdown plan if the need arises.

AUDITION INFORMATION

No photocopies are allowed. Use of photocopies will result in disqualification.

High School Band

Wind auditions are comprised of the following:

- prepared piece - from rotating lists below
- major scales - see scale packet
- chromatic scale
- sight reading

Percussionists will audition on a specialty instrument (snare drum, timpani, or mallets) on which they will perform a solo, technique specific to that instrument, and sight read. In addition, they will each audition on auxiliary percussion instruments. Given that players of each specialty instrument earn acceptable scores, the top scoring player of each will be the first selected for the ensembles. The remainder of the positions will be filled by the highest scoring players regardless of specialty instrument.

High School Chorus

- prepared piece - from rotating list, sung in 4 parts, unaccompanied
- prepared piece can be transposed up or down a whole step if desired
- Following the quartet performance, each student will sing alone (solo), a portion of the same work, as specified by the handbook.

Adjudicators will fill in for missing parts. All adjudicators must be able to sing their part. All students will be auditioned as a full quartet.

High School Jazz Band

Audition Guidelines for All Winds, Piano, Guitar and Bass

(Check the website in Sept. for a decision on the pending Scale Requirements)

- Students perform their part for **Alianza** by Erik Morales.
 - Play 1st part wherever multiple parts are presented
- *Students perform the following mixolydian and dorian scales: Bb, F, C and G (PENDING APPROVAL)*
- Students perform Blues improvisation using **Billie's Bounce** from Aebersold Charlie Parker book Vol. 6. The judge will play a recording of the Aebersold play-along to accompany each student.
- Procedure:
 - Winds -
 - Play the head
 - Improvise melodically for two choruses
 - Return to the head (judge will stop player once the head is restarted)
 - Piano/Guitar -
 - Play the head
 - Comp chords for one chorus as if accompanying a soloist
 - Improvise melodically for one chorus
 - Return to the head (judge will stop player once the head is restarted)
 - Bass -
 - Play the head
 - For one chorus, play a bass line appropriate to the style and chords as if accompanying a soloist
 - Improvise melodically for one chorus
 - Return to the head (judge will stop player once the head is restarted)

High School Jazz Band (continued)

Drummers:

- Perform the required piece from Sittin' in With the Big Band Volume 2* (note that this is a change in volumes from previous years) drum set book. The play-along recording that does not include drums will be used in the audition. The piece will be played all the way through with the recording.
- Perform stylistically appropriate time-keeping patterns and fills in the following styles:
 - Funk
 - Shuffle swing
 - Jazz waltz
 - Ballad (slow 4 with brushes)
- Perform a sight reading excerpt from a big band chart.

New drum set rotation using Sittin' in With the Big Band, Volume 2 published by Alfred Publishing. (Directors only need to purchase the drum set book and its accompanying CD, currently listed at \$14.95.)

2013-14: Jump

2014-15: Softly, As in a Morning Sunrise

2015-16: The Red Door

2016-17: On Green Dolphin Street

Middle School Band

Wind auditions are comprised of the following:

- prepared piece chosen from the rotating list
- major scales - see scale booklet
- chromatic scale - see scale booklet

Percussionists will audition on a specialty instrument (snare drum, timpani, or mallets) on which they will perform a solo, technique specific to that instrument. In addition, they will each audition on auxiliary percussion instruments. Given that players of each specialty instrument earn acceptable scores, the top scoring player of each will be the first selected for the ensembles. The remainder of the positions will be filled by the highest scoring players regardless of specialty instrument. Percussion rudiments required.

Middle School Chorus

This group is selected from nominations made by individual directors from each school. Directors must audition the students (see M.S. choral audition forms).

Middle School Jazz Band

- All scales required for junior high band (see scale packet)
- Prepared piece selected; see rotating list
- Concert Bb blues scale (see scale packet)
- Improvisation is encouraged on Bb blues, but not required
- drummers must demonstrate rock and Latin beats in addition to the prepared piece

DISTRICT VI GENERAL INFORMATION

District VI will not accept any taped auditions made by a student unable to attend the audition. This should help avoid in-school conflicts in advance. Emergencies such as death in the immediate family or illness requiring a physician's excuse will be handled on an individual basis by the ensemble manager and district chairperson.

District VI teachers are urged to use discretion in registering students to audition. Each audition is time consuming, making it imperative that the auditioning student be both prepared and qualified to participate in the festival.

Copies of the student's audition score sheet, including the adjudicator's comments, will be mailed to each school immediately following the formulation of the various ensembles' instrumentation and voicing. Ensemble managers should provide each school with a list of students accepted and an ensemble list showing name, instrument, school and audition score.

All audition score sheets **MUST** be tallied and initialed by each tabulator. In case of a tie occurring above the cut-off score, the student with the highest score on the prepared piece would be seated accordingly.

Following auditions, if an ensemble is weak or missing needed voice or instrumental parts, all schools will be notified and recommendations given to the ensemble manager for their consideration. The festival chairperson upon the recommendation of the ensemble manager must approve any post audition additions. The festival chairperson needs to notify all the schools.

Regarding 6th graders participating in a Middle School Ensemble: 6th graders can be accepted on a provisional basis if their teacher recommends them. Middle School band and choral directors must petition the District VI Chairperson for permission for exceptional 6th graders to be accepted to audition.

Adjudicators, managers and executive committee members will be reimbursed mileage for all district events.

CONCERT BAND INSTRUMENTAL AUDITION GUIDELINES

Major Scales

- High School - up to and including 3 sharps and 3 flats (not concert pitch) memorized and tongued according to the scale booklet
- Middle School - (SEE SCALE PACKET)

Chromatic Scale

- High School - play one continuous slur in eighth note triplets the range of the instrument. (see scale booklet)
- Middle School - (SEE SCALE PACKET)

Sight Reading (High School Only)

- short selection of exercise including Key, meter, dynamics, articulation and rhythms.
- student will be provided ample time to look through the piece before attempted sight reading.

Meters (Middle School and High School)

Students should be familiar with the following meters:

2	3	4	5	6	3
4	4	4	4	8	8

Rudiments (Middle School and High School) SEE www.pas.org for examples of all rudiments

- Snare Drum: flam, ruff, paradiddle, 5 and 9 stroke rolls, long roll (closed)
- Timpani: long roll with/without accented entrance, long roll showing range of dynamics, tuning to stated pitch from given pitch, tuning to given pitch from undetermined starting pitch. (tone matching)

HIGH SCHOOL CHORUS AUDITION LIST

2013-2014 "The Lord Bless You And Keep You" (Lutkin)
2014-2015 "Prayer of Benediction" (Bird)
2015-2016 "Weep O Mine Eyes" (Bennett, arr. Greyson)
2016-2017 "Brothers" (Steubing)

HIGH SCHOOL JAZZ CHOIR AUDITION LIST

2013-2014	A Nightingale Sang In Berkley Square	1565795		Peter Maurice Music
2014-2015	When I Fall In Love	0725001	Phil Azelton	
2015-2016	A Sleeping Bee		Arr., Michelle Weir	contact publisher
2016-2017	Blue Skies	4040	Emerson	Hal Leonard Pub. (m. #21-35)

Students auditioning for Jazz Choir are required to sing the designated selection in a quartet setting. Following the quartet performance, each student will sing alone (solo), a portion of the same work, as specified by the handbook. Students will also be required to sing a designated etude which will determine range and appropriate style.

HIGH SCHOOL BAND & JAZZ BAND AUDITION LISTS

FROM RUBANK "CONCERT AND CONTEST COLLECTION"

All High School Concert Band audition pieces are from "Concert and Contest Collection" so this should be in your library. Students may not audition with photocopies, and will be disqualified if they do. Auditions must be in person, no taped auditions are allowed.

NOTE: Jazz Band Audition rotations for Winds/Piano/Guitar/Bass and Drum are on page 12 and 13, respectively, listed with jazz audition procedures.

INSTRUMENT	YEAR	SELECTION	PAGE #
Flute & Piccolo	13/14	"Serenade"	5
	14/15	"Badinerie"	19
	15/16	"Serenade"	14
	16/17	"Menuet"	12
Oboe	13/14	"Aria & Rondinello"	3
	14/15	"Menuetto & Presto"	6
	15/16	"Romance"	7
	16/17	"Allegro"	15
Clarinet	13/14	"Allegretto Fantasia"	3
	14/15	"Chanson"	15
	15/16	"Ballade"	24
	16/17	"Scherzo in C Minor"	22,23 (no cadenza)
Alto & Bass Clarinet	13/14	"Largo & Allegro Vivace"	5
	14/15	"Sarabande & Bouree"	2
	15/16	"Lament"	6
	16/17	"Allegro" (only)	10

INSTRUMENT	YEAR	SELECTION	PAGE #
Alto & Baritone Sax	13/14	“Largo & Allegro”	12
	14/15	“Introduction & Rondo”	14
	15/16	“Sonatina”	8
	16/17	“Melodie”	5
Tenor Saxophone	13/14	“Allegretto”	5
	14/15	“Adagio & Allegro”	22
	15/16	“Piece in B Minor”	12
	16-17	“Two Little Tales”	8
French Horn	13/14	“Scherzo”	5
	14/15	“Farewell Serenade”	7 no last line
	15/16	“Two Outdoor Scenes”	10 no cadenza
	16/17	“Rondo”	17
Trumpet	13/14	“Sarabanda & Gavotta”	2
	14/15	“Air Gai”	8
	15/16	“Morceau de Concours”	20
	16/17	“Concertino”	22
Trombone & Bassoon	13/14	“Two Spanish Dances”	6
	14/15	“Sarabande & Vivace”	9
	15/16	“Theme de Concours”	8
	16/17	“Canzonetta”	5

INSTRUMENT	YEAR	SELECTION	PAGE #
Baritone (bass & treble) String Bass	13/14	“Sarabande & Gavotta”	2
	14/15	“Concertino”	22
	15/16	“Romance in E Flat”	7
	16/17	“Premier Solo de Concours”	4
Tuba	13/14	“Two Short Pieces”	4
	14/15	“Allegro” (only)	14
	15/16	“Allegro” (only)	10
	16/17	“Air Gai”	8
Mallets - All selections are from Fundamental Studies for Mallets by Garwood Whaley			
	13/14	“Sonatina”	32
	14/15	“Larghetto”	35
	15/16	“Bouree”	30
	16/17	“Sonatina”	26
Timpani - All selections from Intermediate Studies for Timpani by Garwood Whaley			
	13/14		page 40
	14/15		page 10
	15/16		page 6
	16/17		page 8
Snare Drum - All selections are from Portraits in Rhythm by Anthony Cirone			
	13/14		#23
	14/15		#1
	15/16		#29
	16/17		#25

MIDDLE SCHOOL AUDITION LISTS

Middle School Chorus

- 13/14 Alleluia, Mozart
14/15 Da Pacem Domine, Melchior Franck, arr. Goetze

Middle School Jazz Band

- 12/13 You Only Get One Chance, arr. Andy Clark
13/14 Groovin' Hard, Peter Blair

Middle School Band

The Middle School District VI Band audition moved to a new format in 2010-2011 and will continue using the same format for 2013-2014:

Wind Players:

A. Students are required to perform scales from memory as shown on the District created scale sheet. (<http://vmea.org/dist6/downloads.html>)

B. Every student will audition on a short excerpt:

1. Every student will audition on an excerpt from a piece that is instrument specific and chosen by music colleagues within the District. This excerpt will give students the opportunity to demonstrate technical, as well as musical, elements of their musical performance.
2. Contact Tom Nasiatka at Brattleboro Middle School with Middle School Band questions tnasiatka@wsesu.org

Percussionists:

A. Each student will choose either snare, timpani, or mallets and audition on the piece that is associated with whichever instrument is chosen.

B. ALL percussion students will learn the auxiliary instrument piece (the same music that we've been using for years - THIS PIECE IS NOT ON THE WEBSITE). Since all students will audition on auxiliary instruments, percussionists will be exempt from learning the chorale.

FESTIVAL INFORMATION

REGULATIONS AND PROCEDURES

Festival location may be in any District VI school or area facility

1. Participation
 - a. No student is to miss any rehearsal or portion thereof FOR ANY REASON. Failure to follow this specific regulation will result in immediate dismissal from the festival.
 - b. Students will not be allowed to participate in any following year's district festivals if they commit themselves to a group and then back out. Exceptions (i.e. academic ineligibility, documented illness, death in the family) must be approved by the district chairperson. A commitment is made when the registration form and fees have been sent in. There will be no refunds.
 - c. Teachers must recognize that all participating students are responsible for knowing festival rules and regulations beforehand.
 - d. Failure to comply with any further rules or regulations may result in dismissal from the festival, decision to be made between: the festival host, ensemble manager, and district chairperson. In the event that disciplinary action has to be taken, contact with the student's teacher will be made. In extreme cases, the student's parents and principal may be notified.
2. Rehearsals
 - a. Music teachers should register their students before the first general meeting on Friday. If there is any problem with this time, the teacher will contact the host as soon as possible.
 - b. Students must be on time for all rehearsals and concerts (see 1.a)
 - c. Students are responsible for their own property. Name and school should be on all equipment, cases and music folders.
 - d. Students will remain within the festival site at all times.
 - e. Smoking is not permitted at any time by any participating student.
 - f. Materials to bring:
 - i. 2 (TWO!!!!!!) pencils
 - ii. all necessary music and instruments
 - iii. bag lunch for both days
 - iv. concert clothing to change into Saturday
 - v. water bottle
 - g. Wear appropriate yet comfortable clothing for rehearsals; No hats.
 - h. The need for large and/or unusual instruments and their storage should be brought to the attention of the festival host.
3. Concert attire:
 - a. All performing ensembles; High School Band, High School Chorus, High School Jazz Choir, Middle School Band, Middle School Chorus and Middle School Jazz Band will wear the following concert attire for their respective ensemble:
 - i. Boys-black pants, white shirt & tie, black shoes.
 - ii. Girls-at least knee length black skirt (no slits above knee length) or black dress pants, and white top/blouse with shoulders covered, black shoes.

TENTATIVE FALL FESTIVAL REHEARSAL SCHEDULE FOR ALL ENSEMBLES

FRIDAY

9:00-9:45.....Registration
9:45.....General meeting for everyone
10:00-12:00.....Rehearsals
12:00-1:00.....Lunch
1:00-4:00.....Rehearsals
4:00.....Dismissal

SATURDAY

9:00.....Rehearsals
12:10.....HS Jazz Choir dress rehearsal
12:45MS Chorus dress rehearsal.
1:30.....MS Jazz Band dress rehearsal.
2:15.....Auditorium house opens.
3:00.....MIDDLE SCHOOL CONCERT BEGINS:
Jazz Band
Chorus

High school ensembles dress for concert.

4:00.....Middle school concert ends.
MS Chorus and MS Jazz band students meet parents and leave or go to HS concert with parents.

5:00.....HIGH SCHOOL CONCERT BEGINS:
Jazz Choir
Band

TENTATIVE WINTER FESTIVAL REHEARSAL SCHEDULE FOR ALL ENSEMBLES

FRIDAY

9:00-9:45.....Registration
9:45.....General meeting for everyone
10:00-12:00.....Rehearsals
12:00-1:00.....Lunch
1:00-4:00.....Rehearsals
4:00.....Dismissal

SATURDAY

8:45.....Arrival, store concert attire
9:00-12:00.....Rehearsals
12:00-1:00.....Lunch
1:00-3:00.....Dress rehearsals
3:00-3:30.....Dress for concert
3:30-4:00.....Tune/warm-up

4.00.....WINTER FESTIVAL CONCERT BEGINS

**Connecticut Valley Music Festival Association
District VI – VMEA
Expense Reimbursement Form**



Date _____

To the Treasurer:

Please pay the sum of: _____

To: _____

Address: _____

For: _____

Event or Title: _____

Name Printed: _____

Signature: _____

**CONNECTICUT VALLEY MUSIC FESTIVAL ASSOCIATION
VERMONT MUSIC EDUCATORS ASSOCIATION - DISTRICT VI**

FESTIVAL ACCEPTANCE FORM
(Return with one Check to Treasurer)

School:

Cancellations:	group:	Name Corrections:	group:	

I am registering the following number of students for each group:

Fall Festival:

MS Chorus _____
 MS Jazz Band _____
 HS Jazz Choir _____
 HS Concert Band _____

Total x \$10 = _____

Winter Festival

MS Concert Band _____
 HS Chorus _____
 HS Jazz Band _____

Total x \$10 = _____

Please make **one** check payable to: **Connecticut Valley Music Festival Association**
 Mail fees to the CVMFA Treasurer:

Thomas Nasiatka
 Brattleboro Area Middle School
 109 Sunny Acres
 Brattleboro, VT 05301

**CONNECTICUT VALLEY MUSIC FESTIVAL ASSOCIATION
VERMONT MUSIC EDUCATORS ASSOCIATION - DISTRICT VI
ENSEMBLE PREFERENCE SHEET**

School: _____ Director: _____

If your students are auditioning for more than one ensemble and/or instrument, please list their order in preference. This order will be respected unless the festival organizations require otherwise.

Name: _____ 1st

Grade: _____ 2nd

3rd

Name: _____ 1st

Grade: _____ 2nd

3rd

Name: _____ 1st

Grade: _____ 2nd

3rd

Name: _____ 1st

Grade: _____ 2nd

3rd

Name: _____ 1st

Grade: _____ 2nd

3rd

Name: _____ 1st

Grade: _____ 2nd

3rd

**CONNECTICUT VALLEY MUSIC FESTIVAL ASSOCIATION
VERMONT MUSIC EDUCATORS ASSOCIATION - DISTRICT VI
HIGH SCHOOL BAND**

**Audition Registration Form
(Return to Audition Host)**

School: _____ Director: _____

Email: _____ Phone: _____ Audition preference time _____

Student's Name	Instrument (list separately if 2 or more)	

CONNECTICUT VALLEY MUSIC FESTIVAL ASSOCIATION
VERMONT MUSIC EDUCATORS ASSOCIATION - DISTRICT VI
MIDDLE SCHOOL JAZZ BAND

Audition Registration Form
(Return to Audition Host)

School: _____ Director: _____

Email: _____ Phone: _____ Audition preference time _____

Student's Name	Instrument (list separately if 2 or more)	

CONNECTICUT VALLEY MUSIC FESTIVAL ASSOCIATION
VERMONT MUSIC EDUCATORS ASSOCIATION - DISTRICT VI

HIGH SCHOOL JAZZ BAND

Audition Registration Form
(Return to Audition Host)

School: _____ Director: _____

Email: _____ Phone: _____ Audition preference time _____

Student's Name	Instrument (list separately if 2 or more)	

**CONNECTICUT VALLEY MUSIC FESTIVAL ASSOCIATION
VERMONT MUSIC EDUCATORS ASSOCIATION - DISTRICT VI**

MIDDLE SCHOOL BAND
Audition Registration Form
(Return to Audition Host)

School: _____ Director: _____

Email: _____ Phone: _____ Audition preference time _____

Student's Name	Instrument (list separately if 2 or more)	Grade level	

**CONNECTICUT VALLEY MUSIC FESTIVAL ASSOCIATION
VERMONT MUSIC EDUCATORS ASSOCIATION - DISTRICT VI**

HIGH SCHOOL JAZZ CHOIR

Audition Registration Form

(Return to Audition Host)

School: _____ Director: _____

Email: _____ Phone: _____ Audition preference time _____

Student's Name	Voice Part		

**CONNECTICUT VALLEY MUSIC FESTIVAL ASSOCIATION
VERMONT MUSIC EDUCATORS ASSOCIATION - DISTRICT VI**

HIGH SCHOOL CHORUS
Audition Registration Form
(Return to Audition Host)

School: _____ Director: _____

Email: _____ Phone: _____ Audition preference time _____

Student's Name	Voice Part		

**CONNECTICUT VALLEY MUSIC FESTIVAL ASSOCIATION
VERMONT MUSIC EDUCATORS ASSOCIATION - DISTRICT VI**

INDENTURE made this _____ day of _____ in the year _____ by and between the Connecticut Valley District VI Music Festival Association hereinafter referred to as the Association, and _____ hereinafter referred to as the Guest Conductor.

Witnessed

Whereas the Association wished to engage a Guest Conductor for

_____ hereinafter referred to as the Ensemble;

ensemble name

and whereas the Conductor is willing to be engaged NOW, THEREAFTER, the following conditions are mutually agreed upon between the parties:

1. The Concert Festival will be held at

on Friday _____ date _____ and Saturday _____ date _____.

2. The Association Agrees to be responsible for the supervision and arrangements for students, facilities and equipment.

3. The Guest Conductor agrees to conduct the Ensemble, including all rehearsals and in one concert at 4:00 PM on _____ date _____.

4. The Guest Conductor agrees to work directly with the Association in:

- (a) Selecting music for the program.
- (b) Providing a biography for the program and publicity purposes.

5. The Guest Conductor, as employee of the Association, agrees that he/she will not interfere with the execution of the policies of the Association regarding student conduct and eligibility.

6. The Association agrees to pay the Guest Conductor a fee of \$_____.

7. In addition, the Association agrees to pay the expenses of the Guest Conductor only, as follows: Travel, Meals and Lodging.

Guest Conductor

Ensemble Manager/Chairperson

MS CHORUS AUDITION FORM
(Return to **MS CHORUS MANAGER**)

Student name _____

School _____

Circle the appropriate voice part:

Soprano

Alto

Baritone

1. Major scale: Ascending and descending, using solfege syllables (circle one)

All pitches in tune

5

Some pitches out of tune

3

Significant number of pitches in need of tuning

1

2. Pitch Matching: Teacher plays or sings pitch- Student matches a cappella.

Circle each pitch the student matches correctly.



(7 points possible) _____

3. Sing audition selection from the audition list

Intonation

All pitches in tune

5

Minor intonation problems

4

Some pitches out of tune

3

Many pitches out of tune

2